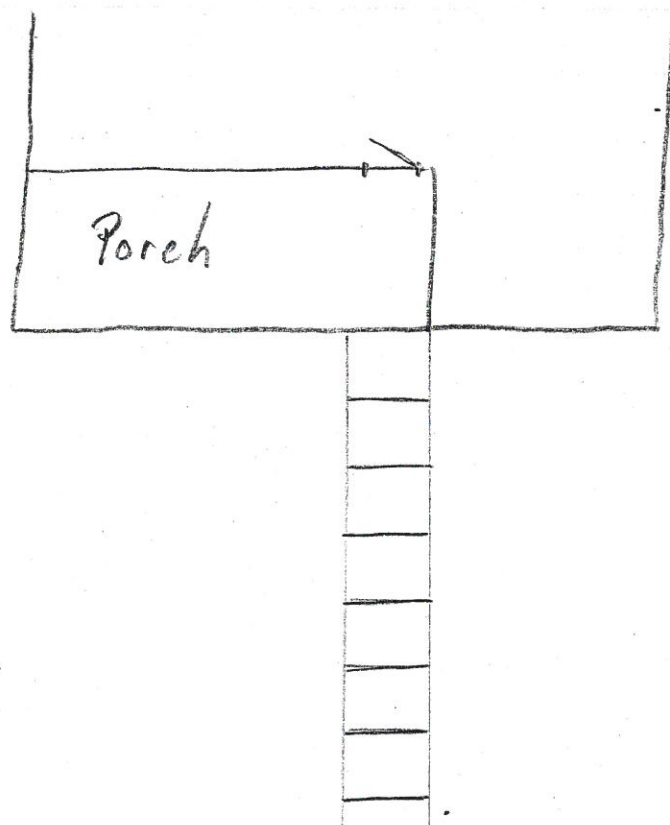


B.M. 677.16
4.42

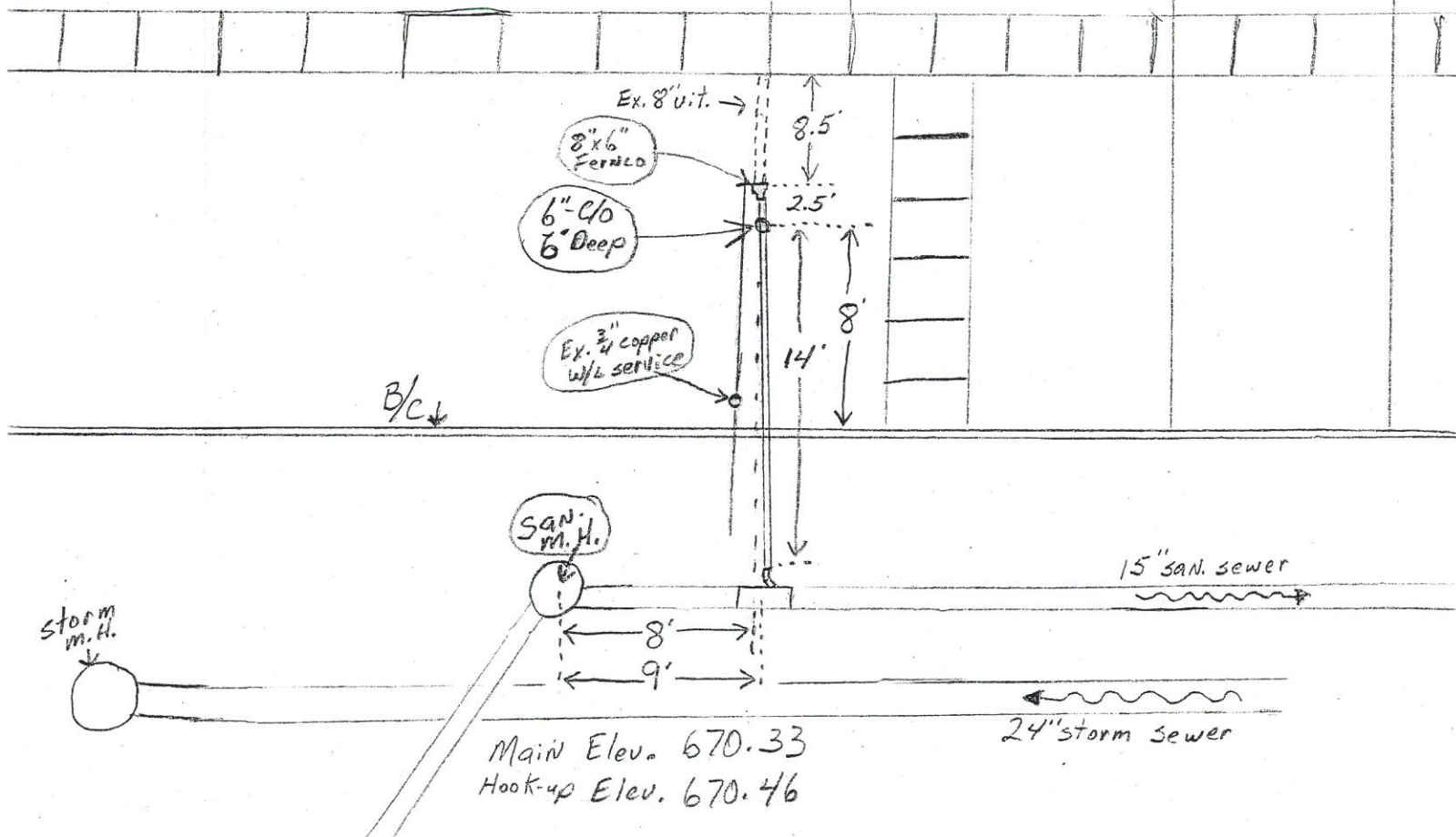
J.M. 681.58

Scott St. Sewer Separation Res # 852

Date Installed:
9-17-01
Installed by:
S.E. Johnson
Inspected by:
Rex Moll



Total 6" SPR³⁵ pipe
16.5' L.F.
5.5' L.F. (riser)
22' L.F. Total



B.M. 677.16
4.42

J.M. 681.58

Scott St. Sewer Separation Res # 852

Date Installed:

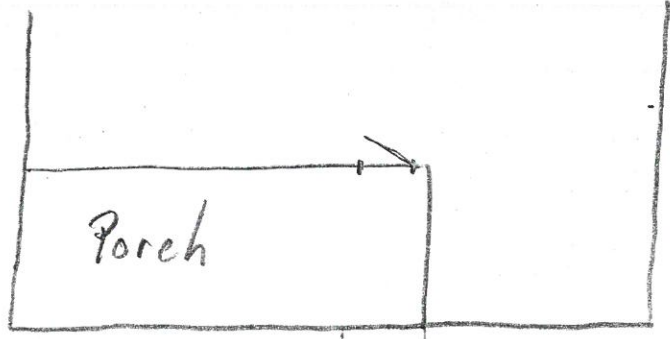
9-17-01

Installed by:

S. E. Johnson

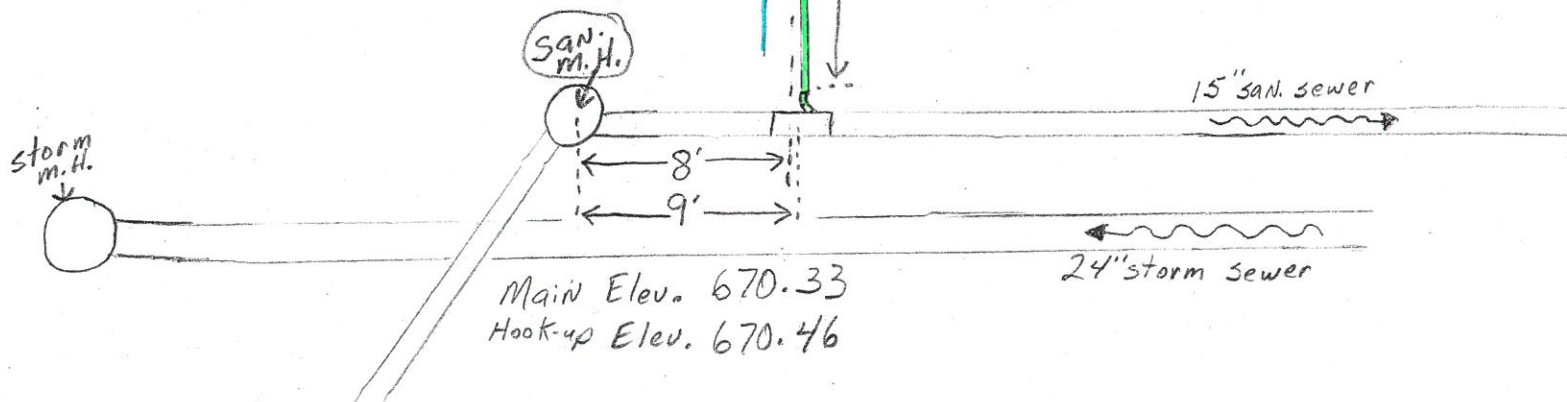
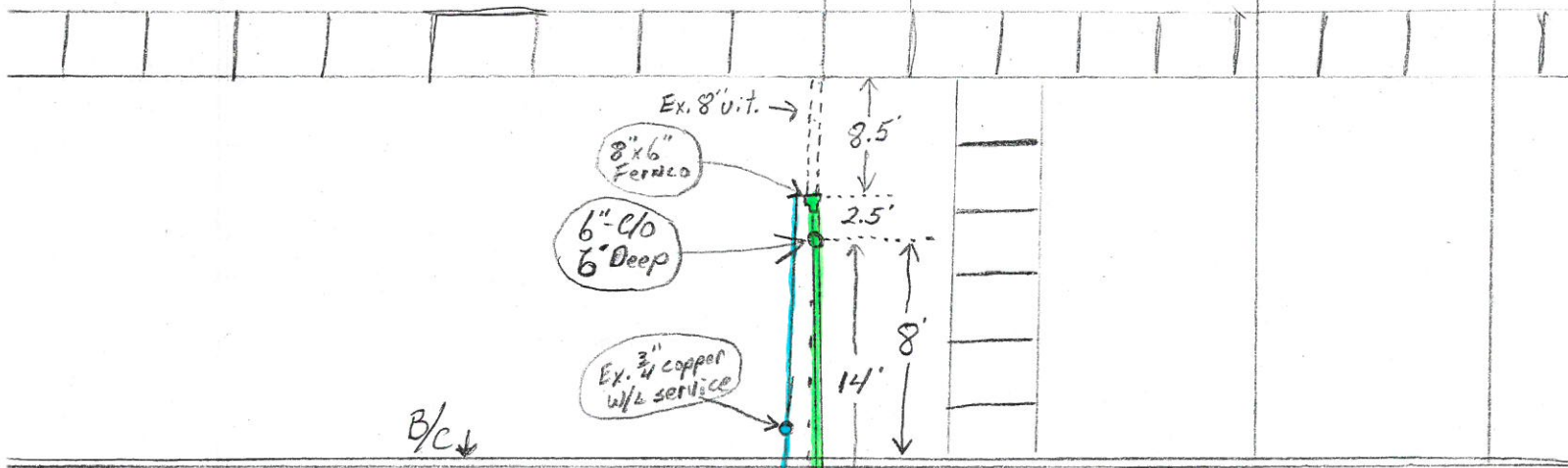
Inspected by:

Rex Moll



Total 6" SPR³⁵ pipe
 16.5' L.F.
 5.5' L.F. (riser)

 22' L.F. Total



B.M. 677.16
4.42

J.M. 681.58

Scott St. Sewer Separation
Res # 852

Date Installed:

9-17-01

Installed by:

S. E. Johnson

Inspected by:

Rex Moll

Total 6" SPR³⁵ pipe

16.5' L.F.

5.5' L.F. (riser)

22' L.F. Total

